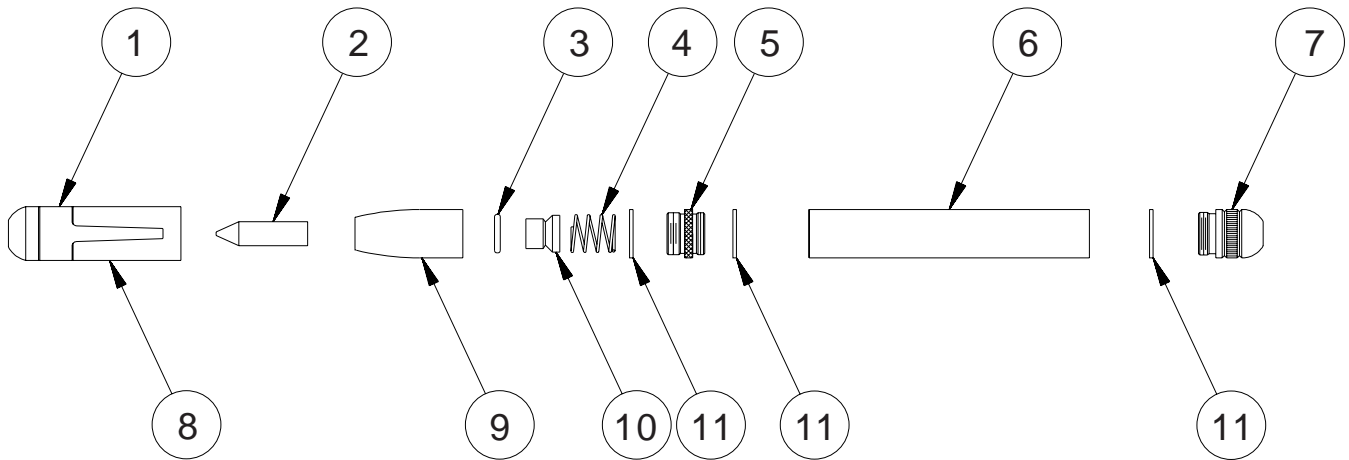


**SL-1 SUPERLINE MARKER
REPLACEMENT PARTS**



SL-1 SUPERLINE MARKER

| KEY NO. | PART NUMBER | QTY. REQD. | DESCRIPTION |
|---------|-------------|------------|---|
| 1 | SL-09 | 1 | POCKET CLIP |
| 2 | SL-2 | 1 | ROUND POINT FELT TIP |
| | SL-4 | | CHISEL POINT FELT TIP (OPTIONAL) |
| | SL-6 | | FINELINE ROUND POINT FELT TIP (OPTIONAL) |
| | SL-8 | | FINELINE CHISEL POINT FELT TIP (OPTIONAL) |
| 3 | SM-07 | 1 | VALVE O-RING |
| 4 | SL-05 | 1 | SPRING |
| 5 | SL-06 | 1 | KNURLED COUPLING |
| 6 | SL-18 | 1 | ALUMINUM HANDLE |
| 7 | SL-19 | 1 | END CAP |
| 8 | SL-08 | 1 | SLIP CAP |
| 9 | SL-02 | 1 | NOZZLE |
| 10 | SL-03 | 1 | VALVE |
| 11 | SL-07 | 3 | KNURLED COUPLING GASKET |

Universal Stenciling & Marking Systems, Inc.

P.O. Box 871 - St. Petersburg, FL 33731 - U.S.A.

Ph: (727) 894-3027 Fax: (727) 821-7944

E-Mail: sales@universal-marking.com Website: www.universal-marking.com